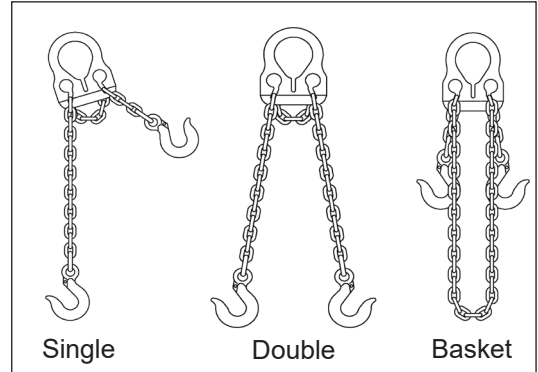


ADJUST-A-LINK™ GRADE 100 CHAIN SLINGS

The most versatile adjustable chain sling available.

Features and Benefits

- Alloy steel master control link for strength and reliability.
- Chain cannot be removed from the master control plate.
- Easily adjustable to accommodate a wide range of applications.
- Each assembly serialized for traceability.
- Complies with OSHA – proof-tested and certified.
- Versatile – one sling does many jobs.
- Yellow powder-coating on master plate and hooks prevents rust.
- Compact plate design fits larger hooks for easier rigging.
- Less bulk than typical double adjustable chain slings.
- High visibility yellow fittings.



Chain Size (in.)	Rated Capacity* (lbs.)		6-ft. Length		10-ft. Length		14-ft. Length		Latch Kit Part Number
	Single @ 90°	Double @ 60°	Part Number	Wt. (lbs.)	Part Number	Wt. (lbs.)	Part Number	Wt. (lbs.)	
7/32	2,700	4,700	30001G10	4.2	30002G10	6.2	-	-	4404
9/32	4,300	7,400	30003G10	7.5	30004G10	10.5	-	-	4404
3/8	8,800	15,200	-	-	30005G10	18.5	30006G10	24.5	38LK
1/2*	12,000	20,800	-	-	30007	42	30008	52	12LK

Note: For AAL w/latches, insert an L after the first 5 numbers in the part number. Example: 30005LG10.

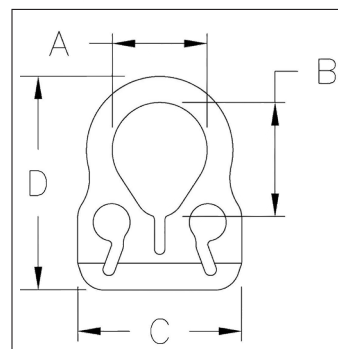
* 1/2" size master link is flame cut, not forged; uses G80 capacity ratings.

* **WARNING** Adjust-A-Link slings should not be used at angles of less than 45°.

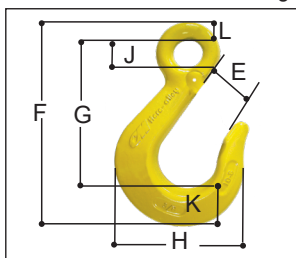


Chain must be seated at the base of adjusting slot of the master control link.

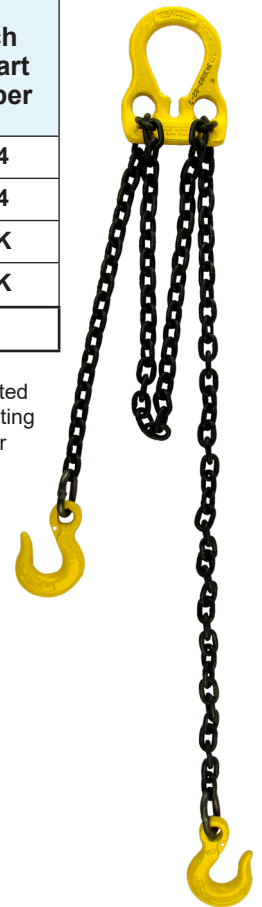
Master Plate Dimensions (in.)				
Chain Size (in.)	Eye Width A	Eye Height B	Overall Width C	Overall Length D
7/32	2.19	2.69	3.94	5.13
9/32	2.88	3.19	5.06	6.50
3/8	3.75	4.13	6.75	8.69
1/2*	4.38	4.38	9.75	12.75



* 1/2" size master link is flame cut, not forged; uses G80 capacity ratings.



Hook Dimensions (in.)							
Chain Size	E	F	G	H	J	K	L
7/32	0.85	3.78	2.62	2.69	0.55	.872	0.30
9/32	1.01	4.41	3.01	3.19	0.64	1.03	0.37
3/8	1.44	6.66	4.77	4.33	0.91	1.30	0.58
1/2	1.78	8.16	5.69	5.50	1.13	1.66	0.75



* **WARNING** Do not exceed rated capacities. Sling capacity decreases as the angle from horizontal decreases. Adjust-A-Link Slings should not be used at angles of less than 45°. Refer to the chain chart on this page and the Effect of Angle chart in the General Information section of this catalog.