



# Lift-All®

PRODUCTS FOR BETTER LIFTING

[www.lift-all.com](http://www.lift-all.com)



Product in use: *Lift-All* Hoist Display

## LIFT-ALL HOIST BASICS

Lift-All hoists are perfect for a low-headroom lift. These economical, durable, and lightweight hoists are excellent options for a variety of lifting applications.

- The fully enclosed gears are protected from contamination.
- Powder-coated and plated finishes on exposed components protect the hoists from corrosion.
- All gears and shafts run on caged roller bearings for smooth operation and long life (excludes mini pullers).
- The self-adjusting Weston style mechanical load brake never requires adjustment.
- The top hook mounting aids in rigging and helps ensure straight line loading between hooks.
- All Lift-All hoists meet ASME B30, OSHA 1915.114, and NASA-STD-8719.9.

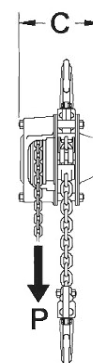
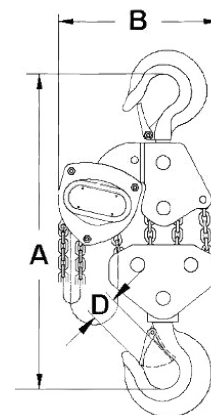


## MANUAL CHAIN HOIST (MCH)

Maintains all the basic hoist features plus...

- Hand chain opening allows operation from side or above permitting use for both lifting or pulling.
- Internal parts are heat treated for strength and reliability with fully enclosed gearing to protect from contamination.
- Precision hoist load chain with strength of G80 chain.
- Weston style mechanical load brake is self-adjusting with double pawls, asbestos-free brake discs and is surrounded by an enclosure to limit contamination.

Part Number	Lift (ft.)	*WLL (Metric Tons)	Load Chain (lbs./ft.)	Hand Chain (lbs./ft.)	Dimensions (in.)				P Effort lbs. @ WLL	Wgt. 10' Lift (lbs.)
					A min.	B	C	D		
MCH005X10	10	0.5	0.54	0.38	10.6	5.4	5.4	1.10	45	22
MCH005X20	20									
MCH005X30	30									
MCH010X10	10	1	0.54	0.38	13.4	6.4	5.8	1.02	72	26
MCH010X20	20									
MCH010X30	30									
MCH015X10	10	1.5	0.92	0.38	15.7	7.2	6.7	1.28	81	42
MCH015X20	20									
MCH015X30	30									
MCH020X10	10	2	0.92	0.38	16.3	7.6	6.7	1.26	82	44
MCH020X20	20									
MCH020X30	30									
MCH030X10	10	3	1.84	0.38	20.9	8.7	6.7	1.46	87	59
MCH030X20	20									
MCH030X30	30									
MCH050X10	10	5	2.96	0.38	25.0	11.3	7.5	1.80	98	101
MCH050X20	20									
MCH050X30	30									
MCH100X10	10	10	5.92	0.38	29.3	15.1	7.5	1.97	98	183
MCH100X20	20									
MCH100X30	30									



General Information  
Web Slings  
Round Slings  
Protection Slings  
Wire Rope  
Chain Slings  
Rigging Hardware  
Mesh Slings  
Cargo Control  
Lift-All Hoists  
Hoist Rings  
Plate Clamps  
Lifting Devices

- \* **WARNING** • Do not exceed working load limit (load rating capacity). • Read and follow all instructions. • Do not use to lift people. • Use only alloy chain for overhead lifting. • Do not lift loads over people.



## LEVER CHAIN HOIST (LCH)

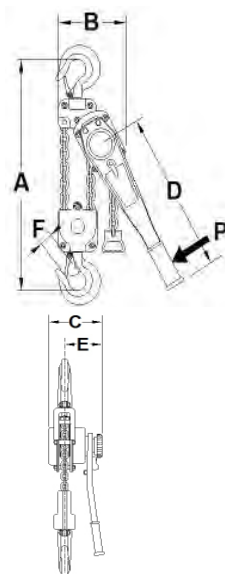


Lever Chain Hoists are highly versatile tools that can be used to pull, lift, drag or stretch. All Lever Chain Hoists use alloy steel chain for long life, and forged steel swivel hooks with latches for safety.

Maintains all the basic hoist features plus...

- Easy one hand operation and setup.
- Non-slip rubber grip lever and 360° rotation require minimal space for operation with 20 to 30% less pull force than other brands.
- Fully enclosed gearing to protect from contamination.
- Drop forged alloy hooks are designed to stretch before chain failure when overloaded and are equipped with cast steel safety latches.
- The top hook articulates to aid in rigging and helps ensure straight line loading between hooks.
- Operates in any orientation.

Part Number	Lift (ft.)	*WLL (Metric Ton)	Dimensions (in.)						P Effort lbs @ WLL	Wgt. lbs./ft.	Wgt. 5' Lift (lbs.)
			A	B	C	D	E	F			
LCH008X5	5	3/4	12.6	5.3	5.8	11.4	3.5	0.94	31	0.54	17
LCH008X10	10										
LCH008X20	20										
LCH015X5	5	1.5	15	6.4	6.9	16.5	4	1.14	54	0.92	26
LCH015X10	10										
LCH015X20	20										
LCH030X5	5	3	18.9	8.3	7.7	16.5	4.3	1.42	72	1.48	46
LCH030X10	10										
LCH030X20	20										
LCH060X5	5	6	24.4	10	7.7	16.5	4.3	1.81	76	2.96	70
LCH060X10	10										
LCH060X20	20										



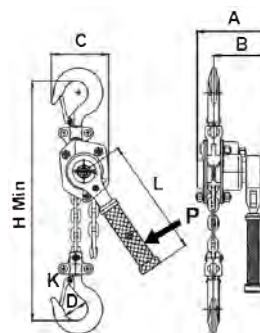
## MINI LEVER HOISTS (MLH)



Mini Lever Hoists are easy to transport, install and store. They can lift up to 1,100 lbs., yet are small enough to fit in your toolbox! The low headroom design makes them the most compact hoist on the market. They perform just like the larger models, plus come with these great features:


- Rubber hand grip for better comfort and security.
- Lightweight and durable all-steel construction with chrome exterior finish to resist corrosion.
- Sleeve bearings maximize serviceability and provide good efficiency.
- Self-adjusting pawl and disc type mechanical load brake ensure positive load control.
- The brake will stop a load even if the operator leaves the unit in free chain mode and in neutral.

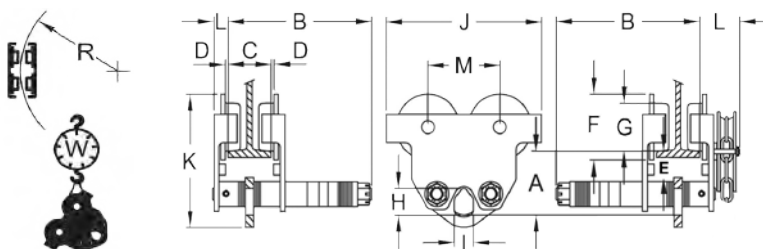
Part Number	Lift (ft.)	*WLL (lbs.)	Dimensions (in.)							P Effort lbs. @ WLL	Wgt. (lbs.)
			A	B	C	D	H	L	K		
MLH003X5	5	550	3.6	2.8	2.5	1.2	9.4	6.3	0.9	56.2	4.40
MLH003X10	10										5.65
MLH005X5	5	1100	4.1	3.1	3.1	1.3	10.2	11.8	1.1	40	7.70
MLH005X10	10										9.50



- \* **WARNING**
- Do not exceed working load limit (load rating capacity).
  - Read and follow all instructions.
  - Do not use to lift people.
  - Use only alloy chain for overhead lifting.
  - Do not lift loads over people.

## PUSH TROLLEY

- 1/2T to 5T installation and adjustment by rotating the threaded hanger shaft.
- Trolleys up to 5T have a 5:1 design factor and can be used for manual or powered hoists.
- The 10T has a 4:1 design factor and must be derated for powered hoist.
- Machined cast iron wheels with universal tread design to fit flat on tapered beam flanges.
- Low headroom design with precision sealed "lubed for life" bearings assure smooth operation.
- Durable all steel construction with standard safety lugs.
- Meets ASME/ANSI B30.16, OSHA, NASA-STD-8719.9, EU Directives: 2006/42/EC.
- ATEX rated  II 3 GD c IIB 54° C X for limited use in hazardous environments.



Part No.	WLL (Metric Tons)	Dimensions (in.)														Wgt. (lbs.)
		A	B	C Standard	D	E	F	G	H	I	J	K	L	M	R Min	
PT005	1/2	3.3	11.5	1.97 - 8.66	0 - 0.12	1.5	2.3	3.4	1.2	0.9	8.9	6.8	-	4	36	18
PT010	1	3.7	11.8	2.28 - 8.66	0 - 0.12	1.7	2.4	3.7	1.4	0.9	9.9	7.4	-	4.7	40	24
PT020	2	4.4	12.2	2.60 - 8.66	0 - 0.12	1.6	3.2	4.6	1.9	1.0	11.8	8.9	-	5.5	48	40
PT030	3	5.8	12.8	2.91 - 8.66	0 - 0.12	2.5	3.9	5.5	2.3	1.3	14.2	11.4	-	6.3	52	69
PT050	5	6.3	13.0	3.54 - 8.66	0 - 0.12	2.2	4.3	5.9	2.8	1.5	15.4	12.3	-	6.7	56	94
PT100	10	7.5	15.5	4.9 - 12.01	0.08 - 0.13	1.8	7.0	5.4	4.4	2.8	18.1	15.5	1.8	7.9	79	198

## BEAM CLAMP



- The easy way to install a fixed hoist mount or rigging point.
- Simple installation by hand, no tools required.
- Compact and portable low headroom design.
- Meets OSHA, ASME B30, NASA-STD-8719.9 and EU Directives: 2006/42/EC.
- Version shown is not advised for use at 15°, 30° or 45° angles. Contact Lift-All for pivoting Beam Clamp.

Part No.	WLL (Metric Tons)	WLL Capacity from 0° Vertical (lbs.)	Dimensions (in.)							Wgt. (lbs.)
			A Adj.	B Max	C	D	E	F Max	H	
BC-10	1	2,200	3.1 - 9.6	14.6	3.7	0.75	7.8	5.6	0.8	7.7
BC-20	2	4,400	3.1 - 9.6	14.6	4.0	0.75	7.8	5.6	0.8	9.9
BC-30	3	6,600	3.5 - 13.0	19.7	5.2	1.12	10.4	7.8	0.9	20.9
BC-50	5	11,000	3.5 - 13.0	19.7	5.6	1.41	10.4	8.2	0.9	24.3
BC-100	10	22,000	3.5 - 13.0	20.6	7.1	1.50	11.2	8.4	1.5	35.2

