

NEW  
PRODUCT

## RESQ-ALL™

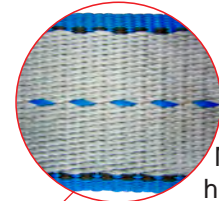
Rated and designed for recovery operations that require pulling and/or lifting.



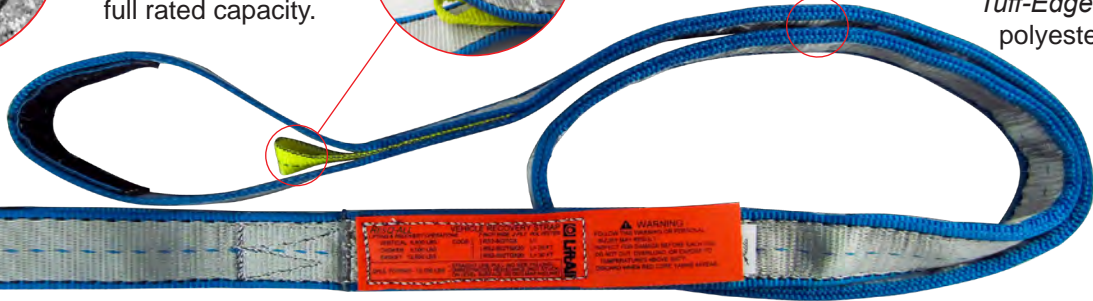
When used in a vertical or choker hitch the 1-ply ResQ-All strap is great for use with soft shackles at the strap's full rated capacity.



Double reinforced eye construction.



Made from high tenacity Tuff-Edge® III polyester.



### Features and Benefits

- **Backup Attachment Points in Each Eye** - A secondary yellow attachment loop in each eye allows for attachment of back-up lanyards to improve safety should an unplanned release of the sling occur during a recovery operation. Its use is recommended whenever any uncertainty exists about the amount of loading or the integrity of the attachment points.
- **Strength & Toughness** - Made from high tenacity Tuff-Edge® III polyester to provide the strength and dynamics needed for towing and recovery operations.
- **SPUL Towing** - A higher Straight-Line Pulling Unrestricted on Level Surface (SPUL) Towing Rating is also provided.
- When used in a vertical or choker hitch the 1-ply ResQ-All strap is great for use with soft shackles at the strap's full rated capacity.
- Each eye has a Cordura-lined bearing point for longer sling life.
- Standard length (ft.): 16, 20, 26, 30.

Ply	Part Number	Strap Width (in.)	Rated Capacity (lbs.)				Dimensions (in.)	
			Towing* @ 3:1	Lifting & Recovery @ 5:1			Min Length	Eye Size L X W
				Vertical	Choker	Basket**		
1 Ply	RS1802TG	2	5,300	3,200	2,500	6,400	36	10 X 2
	RS1803TG	3	8,000	4,800	3,800	9,600	40	11 X 1.5
	RS1804TG	4	10,600	6,400	5,000	12,800	43	12 X 2
	RS1806TG	6	16,000	9,600	7,700	19,200	51	16 X 3
2 Ply**	RS2802TG	2	10,600	6,400	5,000	12,800	36	10 X 2
	RS2803TG	3	14,600	8,800	7,040	17,600	40	11 X 1.5
	RS2804TG	4	19,100	11,500	9,200	23,000	43	12 X 2
	RS2806TG	6	27,500	16,500	13,200	33,000	51	16 X 3
	RS2808TG	8	32,000	19,200	15,400	38,400	63	20 X 2.75
	RS2810TG	10	36,600	22,400	17,900	44,800	73	24 X 3.5
	RS2812TG	12	44,800	26,900	21,500	53,800	75	24 X 4

\* SPUL Towing - A higher Straight-Line Pulling Unrestricted on Level Surface (SPUL) Towing Rating.

\*\*When using a 2-ply strap or basket hitch a 50% rating reduction factor should be applied whenever using soft shackles.