

## SHACKLE PADS

**Always protect synthetic slings from hardware edges.**

Shackles commonly contain screw threads and inlets to pin openings. These edges need to be guarded from contact with synthetic slings. Always use shackle pads in these areas to prevent possible equipment damage or injury to personnel from a loss of load.

### Features and Benefits

#### Promotes Safety

- Prevents possible equipment damage or injury to personnel from a loss of load.

#### Saves Money

- Costs less to replace than expensive rigging hooks.

#### Saves Time

- Quick installation. The pad can be quickly installed using *Velcro*®.
- Lightweight construction.
- Pad may be used on either end of the shackle.



Open Shackle Pad

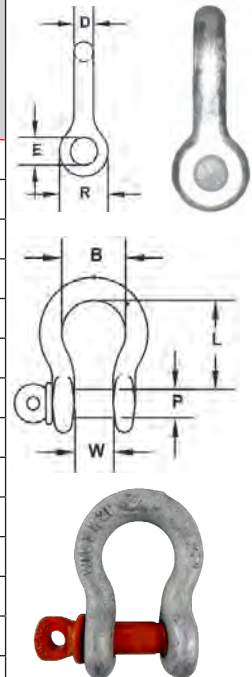
Shackle Size (in.)	Part Number
5/8	58SP
3/4	34SP
1	1SP
1-1/4	114SP
1-1/2	112SP
1-3/4	134SP
2	2SP
2-1/2	212SP
3	3SP

## SLING HARDWARE

### Screw Pin Anchor Shackles

- Carbon shackle, alloy pin.
- Heat treated and tempered.
- Type 4A, Grade A, Class 2.
- Specification: RR-C-271F.
- Design Factor 5:1.
- Hot dip galvanized.

Shackle Size D (in.)	Part Number	1Rated Capacity* (tons)		Dimensions (in.)						Weight Each (lbs.)
		CM®	Others	P	E	W	R	L	B (min.)	
3/16	316SPAS	1/2	1/3	0.25	0.29	0.38	0.57	0.88	0.58	0.06
1/4	14SPAS	3/4	1/2	0.31	0.36	0.47	0.75	1.13	0.75	0.12
5/16	516SPAS	1	3/4	0.38	0.45	0.53	0.84	1.25	0.81	0.20
3/8	38SPAS	1-1/2	1	0.44	0.52	0.66	1.00	1.40	1.00	0.30
7/16	716SPAS	2	1-1/2	0.50	0.58	0.72	1.15	1.69	1.19	0.50
1/2	12SPAS	3	2	0.63	0.70	0.84	1.34	1.94	1.38	0.75
5/8	58SPAS	4-1/2	3-1/4	0.75	0.83	1.06	1.66	2.41	1.63	1.30
3/4	34SPAS	6-1/2	4-3/4	0.88	0.95	1.28	1.94	2.84	1.89	2.30
7/8	78SPAS	8-1/2	6-1/2	1.00	1.09	1.44	2.14	3.31	2.06	3.50
1	1SPAS	10	8-1/2	1.13	1.22	1.72	2.44	3.75	2.52	5.00
1-1/8	118SPAS	12	9-1/2	1.25	1.36	1.84	2.66	4.02	2.69	7.00
1-1/4	114SPAS	14	12	1.38	1.52	2.03	3.15	4.63	2.88	9.50
1-3/8	138SPAS	17	13-1/2	1.50	1.65	2.25	3.25	5.19	3.25	12.50
1-1/2	112SPAS	20	17	1.63	1.77	2.41	3.50	5.63	3.50	17.20
1-5/8	158SPAS	24	20	1.75	1.88	2.66	3.91	6.13	4.13	23.50
1-3/4	134SPAS	30	25	2.00	2.13	2.94	4.06	6.97	4.75	27.70
2	2SPAS	35	35	2.25	2.38	3.28	4.51	7.44	5.50	39.00



**Note:** Standard capacities and dimensions shown, but may vary depending on source of supply. Specify required capacity if critical.

<sup>1</sup> Rated Capacity also referred to as Working Load Limit.

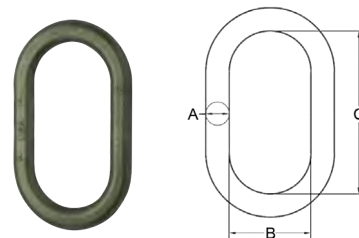
<sup>2</sup> For import SPAS, insert I at the end of the part number. Example: 316SPASI

**\* WARNING** Do not exceed rated capacities. Sling capacity decreases as the angle from horizontal decreases. Do not use slings at angles of less than 30°. Refer to the Effect of Angle chart found in the General Information section of this catalog.

## SLING HARDWARE

### Alloy Oblong Master Link

- Drop forged through 1".
- Larger sizes welded.
- Domestic only.
- Used on metal and synthetic slings.
- Forged master links meet or exceed the design factor requirement for both chain (4:1) and wire rope (5:1) as defined in ASME B30.9.

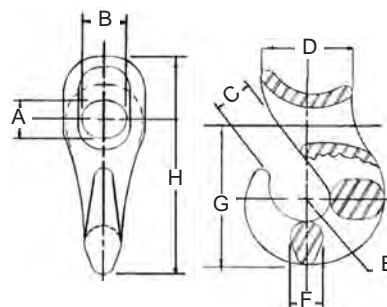


¹Rated Capacity*			Part Number	Standard Oblong for Size and Configuration of Chain Sling				Dimensions (in.)			Wgt. Ea. (lbs.)
5:1 Design Factor		4:1 Design Factor		Single	Double	Triple	Quad	A Oblong Dia.	B Inside Length	C Inside Width	
Tons	lbs.	lbs.									
3.0	6,100	7,600	12DOL	9/32	9/32	7/32	7/32	1/2	5.00	2.50	0.9
6.6	13,200	16,500	34DOL	3/8	3/8	9/32	9/32	3/4	6.00	3.00	2.5
11.2	22,400	28,000	1DOL	1/2 or 5/8	1/2	3/8	3/8	1	8.00	4.00	5.8
16.2	32,400	40,000	114DOL	3/4	5/8	1/2	1/2	1-1/4	8.75	4.38	9.2
24.5	49,000	61,000	112DOL	7/8	3/4	5/8	5/8	1-1/2	10.50	5.25	16
36.7	73,400	91,000	134DOL	1	7/8	3/4	3/4	1-3/4	12.00	6.00	25
44.4	88,800	111,000	2G8OL	1-1/4	1	7/8	7/8	2	14.00	7.00	37
62.6	125,200	156,000	214G8OL	–	1-1/4	1	1	2-1/4	16.00	8.00	54
93.9	187,800	230,000	234G8OL	–	–	1-1/4	1-1/4	2-3/4	16.00	9.00	85

\* 1 Rated Capacity also referred to as Working Load Limit.

### Sliding Choker Hooks

- Reduces rigging time of bundled loads.
- Reduces sling wear when used with thimbles. When used on multi-part wire rope slings, contact *Lift-All* for additional information.
- Saddle is rounded to minimize wear.
- Hook opening is large enough to take a galvanized plow steel thimble the same size as the hook size.
- For use on wire rope slings.



Hook Number (Rope Dia.)	1Rated Capacity* IMP (tons)	Part Number	Dimension (in.)								Wgt. (lbs.)
			A	B	C	D	E	F	G	H	
3/8 - 1/2	1.9	<b>38SCHI</b>	0.67	0.67	0.83	2.00	0.50	0.75	3.88	5.20	1.5
5/8	2.9	<b>58SCHI</b>	0.88	0.88	1.13	2.75	0.56	0.94	4.44	5.94	4.0
3/4	4.1	<b>34SCHI</b>	1.00	1.00	1.13	3.13	0.69	1.25	4.69	6.44	4.5



Contact *Lift-All* for domestic hook information, including larger sizes.

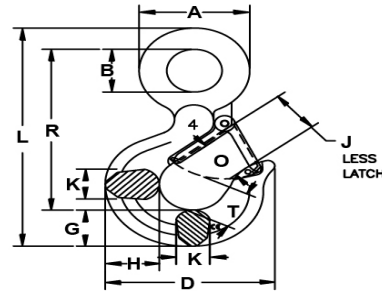
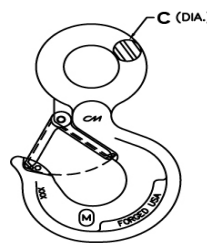
\* 1 Rated Capacity also referred to as Working Load Limit.

**\* WARNING** Do not exceed rated capacities. Sling capacity decreases as the angle from horizontal decreases. Do not use slings at angles of less than 30°. Refer to the Effect of Angle chart found in the General Information section of this catalog.

## SLING HARDWARE

### Eye Rigging Hooks - Domestic

- Drop forged alloy steel.
- Load rating marked on each hook body.
- Pre-drilled latch tab allows addition of heavy-duty latch.
- Design factor 5:1.



DOMESTIC		<sup>1</sup> Rated Cap.* (tons)	Part Number	Dimension (in.)											Wgt. Ea. (lbs.)	
				A	B	C	D	G	H	J	K	L	O	R		T
	Alloy	1	1AEH	1.50	0.75	0.38	3.12	0.87	1.01	0.93	0.63	4.37	0.93	3.13	0.87	0.66
		1-1/2	112AEH	1.75	0.88	0.44	3.37	0.94	1.11	0.97	0.71	5.04	0.97	3.66	0.97	1.12
		2	2AEH	2.13	1.10	0.50	3.80	1.06	1.21	1.02	0.74	5.65	1.02	4.09	1.03	1.46
		3	3AEH	2.50	1.25	0.64	4.20	1.26	1.43	1.19	0.94	6.55	1.16	4.67	1.16	2.42
		5	5AEH	3.08	1.56	0.77	5.11	1.44	1.63	1.50	1.38	7.97	1.41	5.78	1.53	4.10
		7	7AEH	3.88	1.98	0.94	6.24	1.82	2.01	1.78	1.68	10.07	1.69	7.31	1.94	8.16
		11	11AEH	4.69	2.44	1.13	7.89	2.25	2.63	2.38	1.88	12.41	2.19	9.03	2.52	15.60
		15	15AEH	5.34	2.84	1.25	8.53	2.75	3.10	2.50	2.03	14.05	2.30	10.21	2.54	21.58
		22	22AEH	6.63	3.50	1.56	10.30	3.15	3.62	3.30	2.60	17.53	3.12	12.81	2.73	39.89
	Carbon	20	20CSEH	8.50	4.50	2.00	14.06	4.56	-	4.25	3.75	24.69	3.00	18.19	3.88	-
30		30CSEH	9.30	4.94	2.18	15.44	5.06	-	4.75	4.50	27.36	3.38	20.12	4.75	-	
40		40CSEH	10.75	5.69	2.53	18.50	6.00	-	5.75	5.75	32.25	4.12	23.72	5.69	-	

Latches are not included on domestic hooks. If latches are required, you must specify when ordering.

Part Number	1AEH	112AEH	2AEH	3AEH	5AEH	7AEH	11AEH	15AEH	22AEH	20CSEH	30CSEH	40CSEH
Latch Kit	1LK	112LK	2LK	3LK	5LK	7LK	11LK	15LK	22LK	-	-	-

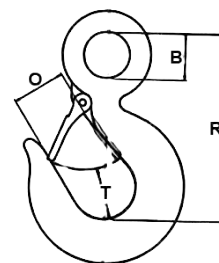
	1Rated Capacity* (tons)	Part Number	Dimensions (in.)			
			B	R	O	T
IMPORT	1	1AEHI	0.75	3.22	0.88	0.81
	1-1/2	112AEHI	0.91	3.66	0.97	0.81
	2	2AEHI	1.12	4.09	1.00	0.84
	3	3AEHI	1.25	4.69	1.12	1.19
	4-1/2	5AEHI	1.56	5.78	1.34	1.38
	7	7AEHI	2.00	7.36	1.69	1.75
	11	11AEHI	2.44	9.06	2.06	2.12
	15	15AEHI	2.83	10.09	2.22	2.72

\* Rated Capacity also referred to as Working Load Limit.

### Eye Rigging Hooks - Import

Maintains all the basic features of Domestic Eye Rigging Hooks plus...

- Standard eye hook on roundsling, web bridles and wire rope slings.
- Available only in alloy steel.

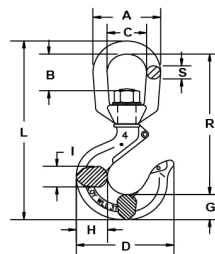
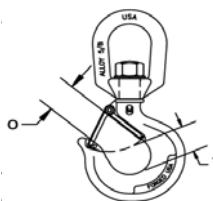


**WARNING** Do not exceed rated capacities. Sling capacity decreases as the angle from horizontal decreases. Do not use slings at angles of less than 30°. Refer to the Effect of Angle chart found in the General Information section of this catalog.

## SLING HARDWARE

### Swivel Eye Rigging Hooks

- Pre-drilled for latches.
- Heat-treated, quenched and tempered.
- Design factor 5:1.



	<sup>1</sup> Rated Cap.* (tons)	Part Number	Dimensions (in.)												Wgt. Ea. (lbs.)
			A	B	C	D	G	H	I	L	R	S	T	O	
<b>DOMESTIC</b>	1	1ASWH	2.00	1.11	1.31	3.06	0.87	1.05	0.63	5.83	4.63	0.38	0.87	0.93	1.05
	1-1/2	112ASWH	2.50	1.38	1.50	3.33	0.94	1.11	0.71	6.83	5.44	0.50	0.97	0.97	1.56
	2	2ASWH	3.00	1.65	1.75	3.67	1.06	1.21	0.88	7.76	6.25	0.63	1.03	1.06	2.50
	3	3ASWH	3.00	1.65	1.75	4.20	1.27	1.43	0.94	8.40	6.49	0.63	1.16	1.16	3.20
	5	5ASWH	3.50	1.77	2.00	5.11	1.44	1.63	1.31	9.76	7.53	0.75	1.53	1.41	5.36
	7	7ASWH	4.75	2.39	2.75	6.24	1.82	2.01	1.68	12.42	9.67	1.00	1.94	1.69	10.56
	11	11ASWH	5.50	2.55	3.25	7.69	2.25	2.63	1.88	14.89	12.06	1.13	2.46	2.22	19.00
	15	15ASWH	6.00	2.47	3.50	8.37	2.59	2.94	2.19	15.79	11.95	1.25	2.62	2.23	26.75
	22	22ASWH	7.75	3.82	4.75	10.19	3.00	3.50	2.69	21.18	16.68	1.50	2.74	3.05	51.80

Latches are not included on domestic hooks. If latches are required, you must specify when ordering.

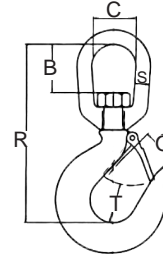
Part Number	1ASWH	112ASWH	2ASWH	3ASWH	5ASWH	7ASWH	11ASWH	15ASWH	22ASWH
Latch Kit	1LK	112LK	2LK	3LK	5LK	7LK	11LK	15LK	22LK

	<sup>1</sup> Rated Capacity* (tons)	Part Number	Dimensions (in.)					
			B	C	O	R	S	T
<b>IMPORT</b>	1-1/2	112ASWHLI	1.31	1.50	0.97	5.28	0.50	0.81
	2	2ASWHLI	1.63	1.75	1.00	6.02	0.63	0.84
	3	3ASWHLI	1.56	1.75	1.13	6.38	0.63	1.19
	4-1/2	5ASWHLI	1.75	2.00	1.34	7.41	0.75	1.38
	7	7ASWHLI	2.31	2.50	1.69	9.59	1.00	1.78
	11	11ASWHLI	2.38	2.75	2.06	11.13	1.13	2.13
	15	15ASWHLI	2.81	3.13	2.25	11.94	1.25	2.50

<sup>1</sup> Rated Capacity also referred to as Working Load Limit.

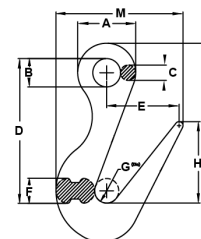
#### Import

- Alloy steel
- Used on wire rope and synthetic slings and Lift-All's GripHook.



### Sorting Hooks

- Quenched and tempered alloy steel.
- Durable powder-coated finish.
- Long tapered point designed for easy grab in rings, pear links, eye bolts or lifting holes.
- Do not load last 1" of the tip.
- Design factor 5:1.



Part Number*	Dimensions (in.)										Wgt. (lbs.)
	A	B	C	D	E	F	G	H	I	M	
2SORT	3.00	1.44	0.78	7.34	3.75	1.28	1.25	3.93	10.09	6.58	6.8

\* For Handle, add H to part number (2SORTH).

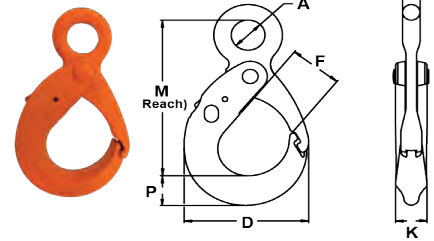
WLL at tip: 2.0-Ton  
WLL at bowl: 7.5-Ton

**\* WARNING** Do not exceed rated capacities. Sling capacity decreases as the angle from horizontal decreases. Do not use slings at angles of less than 30°. Refer to the Effect of Angle chart found in the General Information section of this catalog.

## SLING HARDWARE

### Eye Latchlok Hooks

- Heavy-duty latch with lock prevents accidental opening.
- Drop forged alloy steel.
- Durable powder-coated finish.
- Design factor 5:1 for wire rope slings.
- Design factor 4:1 for chain slings.
- Large eye design for use with G80 and G100 chain.
- 100% proof-tested.
- Meets ASTM A952 standards.

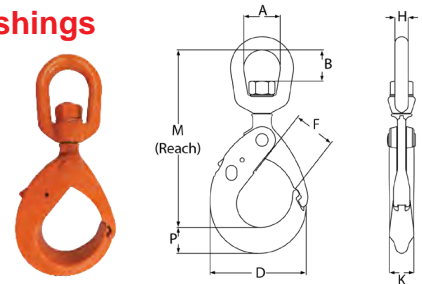


Chain Size	Part Number	¹Rated Capacity			Dimensions (in.)							Weight Each (lbs.)
		5:1 Design Factor		4:1 Design Factor	A	M	P	D	F	H	K	
		Tons	lbs.	lbs.								
9/32	932G10ELLH	1.7	3,400	4,300	1.09	537	0.88	3.77	1.64	0.47	0.91	2.50
3/8	38G10ELLH	3.5	7,000	8,800	1.36	6.65	1.07	4.74	2.27	0.59	1.15	4.74
1/2	12G10ELLH	6.0	12,000	15,000	1.57	8.79	1.58	6.26	2.91	0.80	1.47	10.00
5/8	58G10ELLH	9.0	18,000	22,600	2.00	10.37	1.97	7.37	3.22	1.03	1.85	16.00

**Note:** For welded 7/32" chain sling use 9/32" eye latchlok hook. <sup>1</sup> Rated Capacity also referred to as Working Load Limit.

### Swivel Eye Latchlok Hooks with Bushings

- Hook swivels beneath the eye.
- Heavy-duty latch with lock prevents accidental opening.
- Durable powder-coated finish.
- Positive locking hook.
- Design factor 5:1.



Part Number	Chain Size	<sup>1</sup> Rated Capacity		Dimensions (in.)								Weight Each (lbs.)
		Tons	lbs.	H	M	P	D	F	A	B	K	
<b>932G10SLLH</b>	9/32	1.7	3,400	0.62	7.17	0.88	3.77	1.64	1.50	1.33	0.91	3.5
<b>38G10SLLH</b>	3/8	3.5	7,000	0.77	8.73	1.07	4.76	2.26	1.75	1.63	1.15	4.8
<b>12G10SLLH</b>	1/2	6.0	12,000	0.93	11.18	1.58	6.26	2.91	1.00	1.76	1.47	10.6
<b>58G10SLLH</b>	5/8	9.0	18,000	1.00	13.35	1.97	7.37	3.22	2.75	2.38	1.85	17.0

**Note:** A swivel hook with a bearing design is also available. The bearing design allows the hook to rotate freely while the load is applied.

<sup>1</sup> Rated Capacity also referred to as Working Load Limit.

### USING LATCHLOK HOOKS SAFELY

- Do not apply load unless latch and hook are completely closed and locked.
- Make certain that the latch does not support any part of the load.
- When lifting, make certain that the load is firmly seated in the base (bowl) of the hook.
- Do not exceed the working load limit.
- Do not use if the hook is visibly distorted, damaged, or worn.
- Keep body and other objects clear of the latch when closing to avoid the pinch point.
- Do not side load or tip load hook.
- User should be properly trained to understand safe rigging practices.
- Inspect hook and latch periodically. If the hook or latch is damaged or if the latch fails to interlock with the tip, the hook should be removed from service.

\* **WARNING** Do not exceed rated capacities. Sling capacity decreases as the angle from horizontal decreases. Do not use slings at angles of less than 30°. Refer to the Effect of Angle chart found in the General Information section of this catalog.