

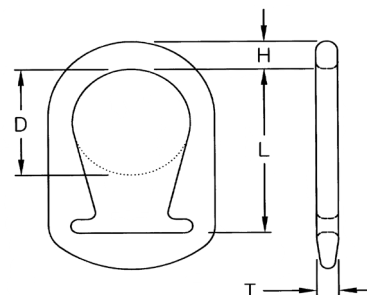
## UNILINK™ SLING HARDWARE

### Unilink Web Sling Hardware

Unilinks are a forged, high carbon steel fitting that function as both a triangle and choker.

#### Features and Benefits

- Smooth rounded profile helps protect sling, worker, and load.
- Unilink has the same rated capacities as TT or TC slings.
- Functions both as a triangle and a choker, allowing you to choke from either end.
- Can be re-webbed to reduce cost.
- Powder-coated finish for longer life.
- Unilinks cost less than triangle/choker combinations.
- Large crane hook opening speeds rigging.
- Forged steel for strength and reliability.
- *Web-Trap™* feature keeps web aligned on hardware.



#### Unilink Hardware Specifications

Web Width (in.)	Dimensions (in.)				Weight (in.)	WLL (lbs.)
	L	D	H	T		
2	3.69	2.0	0.69	0.56	1.1	8,000
3	5.06	3.0	0.88	0.63	2.4	10,800
4	6.19	4.0	1.00	0.75	4.0	14,400

Avoid contact of hardware with load edges.

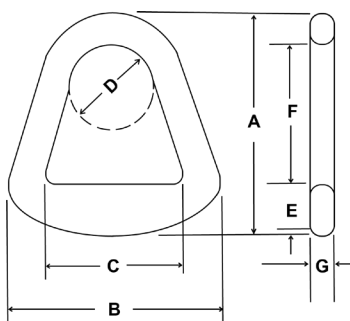
### Forged Aluminum Triangles and Chokers

Aluminum is severely degraded by alkali, caustic environments, acids and salt water.

Aluminum triangles and chokers are available but may only be used with single-ply web slings within the rated capabilities shown in the table. They should not be used with *Dura-Web™* 2000 webbing.

Forged from aircraft aluminum, this tough alloy is stronger than mild steel. Aluminum has the advantages of being lightweight, non-sparking and does not rust.

**Note:** Aluminum triangles and chokers **DO NOT** offer the advantages of the *Web-Trap* feature. Aluminum fittings are not as durable and cost more than steel.



#### Forged Aluminum Triangles

Part Number	Dimensions (in.)							Approx. Weight (lbs.)	WLL
	A	B	C	D	E	F	G		
2ALT1	4.0	3.63	2.25	1.75	0.94	2.38	0.56	0.31	3,360
3ALT1	5.25	5.0	3.25	2.0	1.19	3.31	0.63	0.75	5,000
4ALT1	6.25	6.63	4.38	2.38	1.44	4.0	0.69	1.1	6,700
6ALT1	8.31	8.88	6.38	3.13	1.75	5.50	0.94	2.7	9,700

#### Forged Aluminum Chokers

Part Number	Dimensions (in.)							Approx. Weight (lbs.)	WLL
	A	B	C	D	E	F	G		
2ALC1	6.13	5.25	2.13	1.75	0.94	2.38	0.56	0.73	3,360
3ALC1	7.5	7.13	3.13	2.0	1.13	3.31	0.63	1.3	5,000
4ALC1	8.75	8.75	4.13	2.38	1.44	4.0	0.69	1.9	6,700
6ALC1	11.31	11.75	6.13	3.13	1.75	5.50	0.94	5.1	9,700

