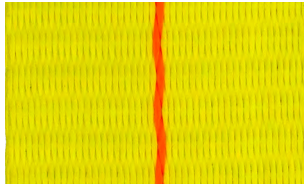


WEB SELECTION

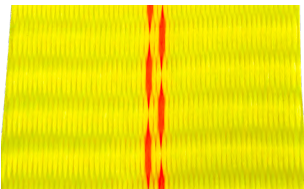
STANDARD TIEDOWN WEBBING

This polyester webbing offers exceptional value for everyday use.



SINGLE STRIPE

- Used for 2" assemblies with a 1,600 lbs. Working Load Limit.
- Used in all 4" assemblies and winch straps.
- Approximately 1/32" thick.

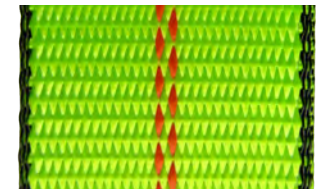
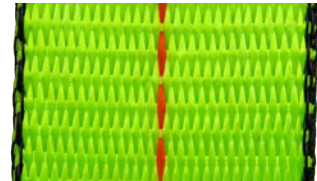


DOUBLE STRIPE

- Used for 2" assemblies with a 3,300 lbs. Working Load Limit.
- Used in all 3" assemblies and winch straps.
- Approximately 3/64" thick.

HI-VIS TUFF-EDGE WEBBING

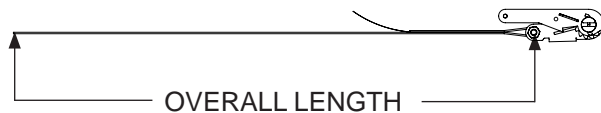
The brightness of our polyester **Hi-Vis Tuff-Edge** webbing allows for increased visibility on the roadside. Special black polymer edge yarns provide 32% better edge cut resistance for longer assembly life.



RATCHET ASSEMBLIES

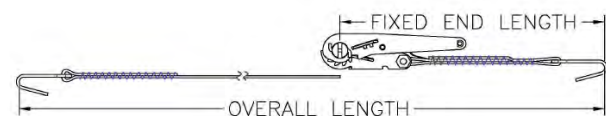
Type A Assemblies

One-piece assemblies for use without end fittings. Length measured from ratchet mandrel to end of webbing.



Type B Assemblies

Two-piece assemblies with one adjustable end and one fixed end attached to the ratchet. Numerous end fittings are available to handle any requirements.



Fixed End Length

2" wide assemblies: 16" long

1", 3" and 4" wide assemblies: 18" long

Note: Chain Anchor adds 14" to fixed end length

Series 1,000 - 1" Wide Polyester Webbing

- Ultimate Break Strength: 2,100 lbs.*
- Working Load Limit: 700 lbs.*

* Exception: Series 1,000 Ratchet Assembly with Flat Hooks, WLL is 330 lbs. and Ultimate Breaking Strength is 1,000 lbs.



Series 5,000 - 2" Wide Polyester Webbing

- Ultimate Break Strength: 5,000 lbs.
- Working Load Limit: 1,600 lbs.



Series 10,000 - 2" Wide Polyester Webbing

- Ultimate Break Strength: 10,000 lbs.
- Working Load Limit: 3,300 lbs.



Series 15,000 - 3" or 4" Wide Polyester Webbing

- Ultimate Break Strength: 15,000 lbs.
- Working Load Limit: 5,000 lbs.

